



RABACONDA
RIDER DEVELOPED DESIGNS

DIRT BIKE TIRE CHANGER

USER MANUAL

EN-US 2024/1

COLOPHON

ADDRESSES

Postal address:
RABACONDA OÜ
Tihniku 2
Pärnu 80034
Estonia

Internet address:
rabaconda.com

E-mail address for technical support:
support@rabaconda.com

Phone:
(USA) 1-646-933-1298
(Europe) +44 7960 246 838

MANUAL INFO

These are the original instructions. The English language is binding. No part of this documentation may be reproduced without the written permission of Rabaconda®.

TABLE OF CONTENTS

1 PREFACE	4
1.1 Identification	4
1.2 Features	4
2 WARRANTY UPON PURCHASE	4
3 INTRODUCTION	4
3.1 Explanation of Documentation	5
3.2 List of Abbreviations	5
3.3 Safety Warning Messages in this Manual	5
3.4 Intended Users	5
3.5 Intended Use	5
3.6 Unintended Use	5
3.7 What is in the Box	6
4 SAFETY	7
4.1 Introduction	7
4.2 Generally Applicable Safety Rules	7
4.3 Personal Protective Equipment	7
4.4 Important Safety Rules for this Tire Changer	8
4.5 General Safety Rules for Tools	8
4.6 Not Allowed Use	8
5 OPERATION INSTRUCTIONS	9
5.1 Warnings and Rules for Safe Operation	9
5.2 Prepare for Assembling	9
5.3 Human	9
5.4 Operator	9
5.5 Workplace	9
5.6 Assembling the Tool	9
5.6.1 Assembling Preparation	9
5.6.2 Assembling	10
5.7 Prepare for Operation	11
5.8 Dismounting a Tire	12
5.9 Mounting a Tire	15
5.10 Packing, Transport, and Storage	18
6 MAINTENANCE AND REPAIR	18
6.1 Ordering Parts	18
7 SPARE PARTS AND WEARING PARTS	18
8 SPECIFICATIONS	19
9 WARRANTY	19
9.1 Warranty Provisions	19
9.2 Limited Warranty	19
9.3 Liability	19

1 PREFACE

1.1 Identification

The Rabaconda® Dirt Bike Tire Changer is a nifty, advanced, efficient tire-changing tool for motocross, enduro, dual sport, adventure, and all motorcycles in general, which have wire-spoke rims. Motorcyclists can easily use it at home, service technicians can use it in workshops or events. The tool allows you to change tires quickly, easily, and efficiently.

In the beginning, it takes some practice to work with it properly. It is a sophisticated tool that requires some experience. Give yourself time to gain this experience by changing a few tires. If you still have problems, contact our Technical Support.

1.2 Features

- Lightweight and easy to carry.
- Compact – taking very little room in your garage.
- Store it away on a shelf until you need it again.
- Strong carry bag for comfortable travel and compact storage.
- Can be set up within seconds, garage or trackside.
- Innovative frame design with great stability and low weight.
- Long lever for breaking even the most challenging beads.
- The tire can be entirely dismantled with the unique bead breaker system.
- Comfortable oval-shaped operating handle with good grip.
- Quickly adjustable for different wheel sizes.
- Convenient tire iron pocket.
- Lifetime Warranty.
- 6 Months Money-Back Guarantee.

2 WARRANTY UPON PURCHASE

Lifetime Warranty

Lifetime warranty for manufacturer defects. See also Chapter 9.

Money-back guarantee

All Rabaconda® products have a money-back guarantee if you are unhappy with our tools, no questions asked. You have six months to test and become familiar with our products. Take your time!

3 INTRODUCTION

The Rabaconda® Dirt Bike Tire Changer is designed for wire-spoke wheels. It is adaptable to any wheel size between 16”-21” in diameter, and has excellent ergonomics and low weight. It works with wheel hub inner diameters of 20-27mm (12-30mm with additional accessories).

With Rabaconda®, you can swap your tires quickly, whether riding the street or hitting the track.

Read this User Manual before operating the Tire Changer



- Pay special attention to safety precautions presented in this manual, as they prevent accidents causing wheel or tool damage or human injury.
- This tool can be dangerous. Therefore, reading this manual and watching tutorial videos on our website before the operation is essential.
- This manual describes characteristics unique to the Rabaconda® Dirt Bike Tire Changer.
- In this manual, safety is a priority. By reading it, you will become aware of the dangers and hazards of operating this tool.

Using This Manual

This User Manual is created to help familiarize you with Safety, Assembly, Operation, Adjustments, Maintenance and Troubleshooting.

The information contained within this manual was current at the time of printing. Some parts may change slightly to assure you of the best performance. To check for updates, refer to our website or call us to speak to one of our representatives.

3.1 Explanation of Documentation

Chapter 3; ‘Introduction’, and Chapter 4, ‘Safety’ is essential for anyone working on the device. For operators is essential:

- Chapter 5: Assembling and Operation Instructions.
- Chapter 6: Maintenance.

3.2 List of Abbreviations

- CE: Conformité Européenne.

3.3 Safety Warning Messages in this Manual

Read this manual carefully before using the Tire Changer to understand how to use it correctly. If there is something in this manual you don’t understand, ask Technical support to explain it.

- After reading, store the manual in a safe place, easily accessible for everyone working with the tool.
- Incorrect handling of the equipment could result in personal injury or physical damage.
- The manufacturer assumes no responsibility for any damage caused by mishandling beyond normal usage defined in this User Manual.

DANGER!

This symbol indicates a potentially hazardous situation that, if not avoided, could result in death or severe injury, or machine damage.

This RED symbol indicates All WARNING notifications.

WARNING!

This symbol indicates a potentially and imminently hazardous situation that, if not avoided, will result in death or severe injury.

This ORANGE symbol indicates All DANGER notifications.

CAUTION!

This symbol indicates a potentially hazardous situation that, if not avoided, may result in minor or moderate injury.

This YELLOW symbol indicates All CAUTION notifications.

NOTICE!

This Notice symbol shows special procedures or points out essential facts.

Always adhere to the recommendations and warnings in this manual. They are the recommendations of Rabaconda®. If you ignore these recommendations, there will be no warranty.

3.4 Intended Users

Intended users are technically skilled Motorcycle Drivers or Motorcycle Technicians.

3.5 Intended Use

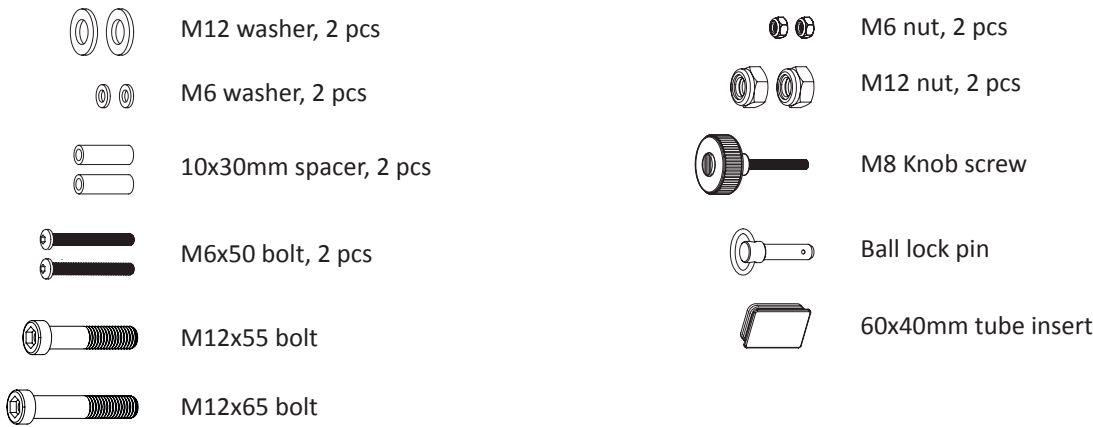
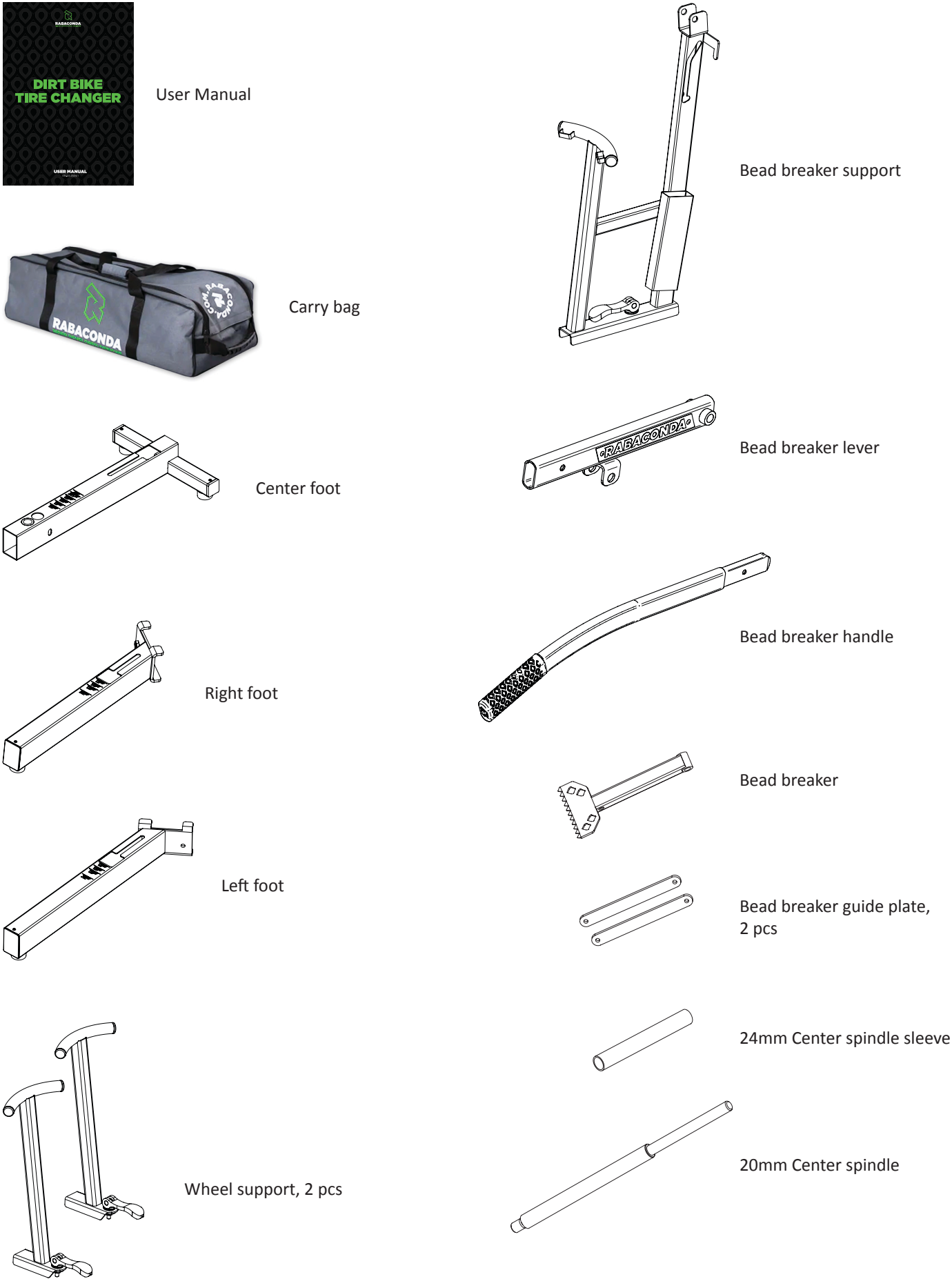
The Rabaconda® Dirt Bike Tire Changer is intended for use as a tool for removing and installing motorcycle tires.

3.6 Unintended Use

Unintentional use is any other use than described under ‘Intended use.’


3.7 What is in the Box

The tool comes in a cardboard box. The following parts are in the box. Check the content.



4 SAFETY

WARNINGS!



- READ AND UNDERSTAND ALL SAFETY MEASURES AND WARNINGS BEFORE STARTING ANY OPERATION OR ADJUSTMENTS.
- UNTRAINED PERSONS WHO HAVE NOT THOROUGHLY READ AND UNDERSTOOD THIS MANUAL MIGHT NEVER APPROACH THE DEVICE.
- DO NOT TRY TO USE TIRES WITH A BIB MOUSSE INSERT WITH THIS MACHINE, AS THIS CAN LEAD TO DAMAGING THE TIRE CHANGER.
- USING EXCESSIVE FORCE SHOULD BE AVOIDED AT ALL TIMES AS IT CAN LEAD TO PERSONAL INJURY OR DAMAGE TO THE WHEEL OR THE TIRE CHANGER.

4.1 Introduction

The device design is such that safe use is possible. Anyone who works with it must know the instructions and regulations stated in this manual.

The owner ensures that users know the instructions, operating regulations, and observations.

4.2 Generally Applicable Safety Rules

This list contains general safety measures which must be complied with for personal safety reasons.

- Make sure children and animals cannot come into the machine’s vicinity.
- Only persons who have read and understood the operating instructions might be in the machine’s vicinity.
- Unauthorized persons may not perform acts if the machine is in use.
- Do not remove the warning decals, stickers, or markings.
- Always clean the machine properly and keep the workplace free of dirt and obstacles.
- Always ensure sufficient ambient lighting.

4.3 Personal Protective Equipment



While handling, assembling, and maintaining the Tire Changer, adhering to all recommended safety instructions and ensuring that the correct Personal Protective Equipment (PPE) is used.

Always wear:

- Safety gloves for hand protection and prevention of cuts from sharp edges.
- Steel-tipped safety boots for foot protection from falling objects.
- Safety glasses for eye protection and prevent damage caused by shooting particles.
- Any other Personal Protection Clothing or Equipment that is required, specified, or dictated by the working environment.
- Your Company can prescribe additional (safety) instructions. This Manual does not describe how to comply with this.

4.4 Important Safety Rules for this Tire Changer

- The operator should be familiar with all functions of the device.
- Persons under 16 should NEVER operate the tool.
- Do not operate the device for any purpose other than what it is meant for. (See Warranty for details.)
- Visually inspect the tool; check all fasteners and securing parts.
- Take time to learn proper techniques, and never use excessive force to stretch a tire on or off a rim.
- It takes practice, experience, and extra caution to ensure that the tire irons will not damage the rim finish.
- Take your time to learn the proper technique and allow yourself a few tire changes to master the tool.
- Never use excessive force.
- Always ensure the tire is in the drop center from the opposite side when mounting/dismounting the tire.
- When mounting/dismounting a tire with stiff sidewall, warm up the tire before the change.
- Always clean the wheels from dirt and debris to avoid scratches on the rim.

4.5 General Safety Rules for Tools



- Incorrect practice or lack of care can cause wounds, mutilation, suffocation, and other bodily injuries.
- Ensure the work area around the equipment is smooth, clean and free from any obstacles. Keep in mind that a dangerous situation can always arise.
- Always wear safety glasses and protective shoes when carrying out the operation.
- Always use tools that are in a good state of repair. Ensure you know how to use the tools before doing any work.
- ONLY use replacement parts from the same brand as the relevant part.
- Do not use a tool if you are tired or consume alcohol or drugs, affecting your ability to work perfectly.
- Parts that rotate can cause cuts, mutilations or strangulation.

4.6 Not Allowed Use

It is not allowed to use the Rabaconda® Dirt Bike Tire Changer for other than motorcycle tire-changing activities.

5 OPERATION INSTRUCTIONS

5.1 Warnings and Rules for Safe Operation



WARNING!

- **Persons under 16 should not operate the Dirt Bike Tire Changer.**
- **Ensure you understand all procedures for assembling and operating the Tire Changer.**
- **Never operate the Tire Changer while under the influence of drugs or alcohol.**
- **DO NOT operate the Tire Changer for anything other than what it is meant for.**
- **Always set up the Tire Changer according to the wheel diameter and use the appropriate center spindle and center spindle sleeve.**
- **During the bead-breaking operation, stay balanced on both feet at any time when using the device, avoid losing your balance, and be cautious not to cause any injuries.**
- **Ensure the wheel entirely rests on all three wheel support tubes. Otherwise, you will damage (bend) the center spindle or cause damage to the wheel.**
- **During tire mounting/dismounting, ensure that the tire is forced into the drop center at the opposite side of where the tire irons are being used for mounting/dismounting.**
- **Always use special-purpose lubricant when mounting and dismounting a tire.**
- **Any excessive force trying to force the tire on or off the rim considerably raises the risk of severe personal injury or damage to the rim, the tire, the tire irons or the Tire Changer.**
- **Avoid contact between the bead breaker and rim.**

5.2 Prepare for Assembling

- Ensure all parts are present.
- Adhere to PPE safety regulations as described in the manual.

5.3 Human

An operator makes the Tire Changer ready for use and starts it as described further in this chapter.

5.4 Operator


Every well-skilled technical person over 16 can act as an operator. For safely using this Tire Changer, the operator must have the following specific professional knowledge:

- General knowledge of industrial safety procedures.
- Basic knowledge and skills regarding motorcycle service equipment.
- Basic knowledge and skills regarding motorcycle tire change principles and processes.

5.5 Workplace

To change a tire, you need a minimum distance of 1 m around the device to assemble, remove, and install a tire.

5.6 Assembling the Tool



WARNING!

- **Read and understand all instructions before assembling the Tire Changer.**
- **Watch tutorial videos on our website rabaconda.com/start**

5.6.1 Assembling Preparation

- Inspect the whole tool set visually and check all vital components for damage.
- Check that the working area is relatively smooth and free of obstacles.
- Assemble the tool on a protective floor cover.
- Keep animals far away from the workplace.
- Fit the parts together, as shown in the figure of 5.6.2

5.6.2 Assembling

Fit the parts together, as shown in Figures A and B.

- 1. Mount 60x40mm tube insert (1) to the end of Center foot (2).
- 2. Place Center foot (2) on the ground and place Right foot (3) and Left foot (4) as shown. Insert the M8 Knob screw (5) through all these parts and fasten tightly.
- 3. Mount the Bead breaker support (6) to the Center foot (2) and lock it with the Cam lever screw (7). In case the cam lever feels loose, fasten the flange nut with a 14mm wrench.
- 4. Mount the Wheel supports (8) to the side feet as shown and lock them with the Cam lever screws.
- 5. Mount 20mm Center spindle (9) in the Center foot (2). Fasten it tightly. The hole in the Center spindle can be used for tightening and releasing the spindle.
- 6. Mount the 24mm Center spindle sleeve (10) over the Center spindle (9) or if not needed, into the hole in the Center foot (2).
- 7. Assemble the Bead breaker system parts as shown in Figure B. Do not overtighten the M6 nuts. Allow the plastic spacer to rotate freely.
- 8. Mount the Bead breaker handle (11) in to the Bead breaker arm and insert Ball lock pin (12).

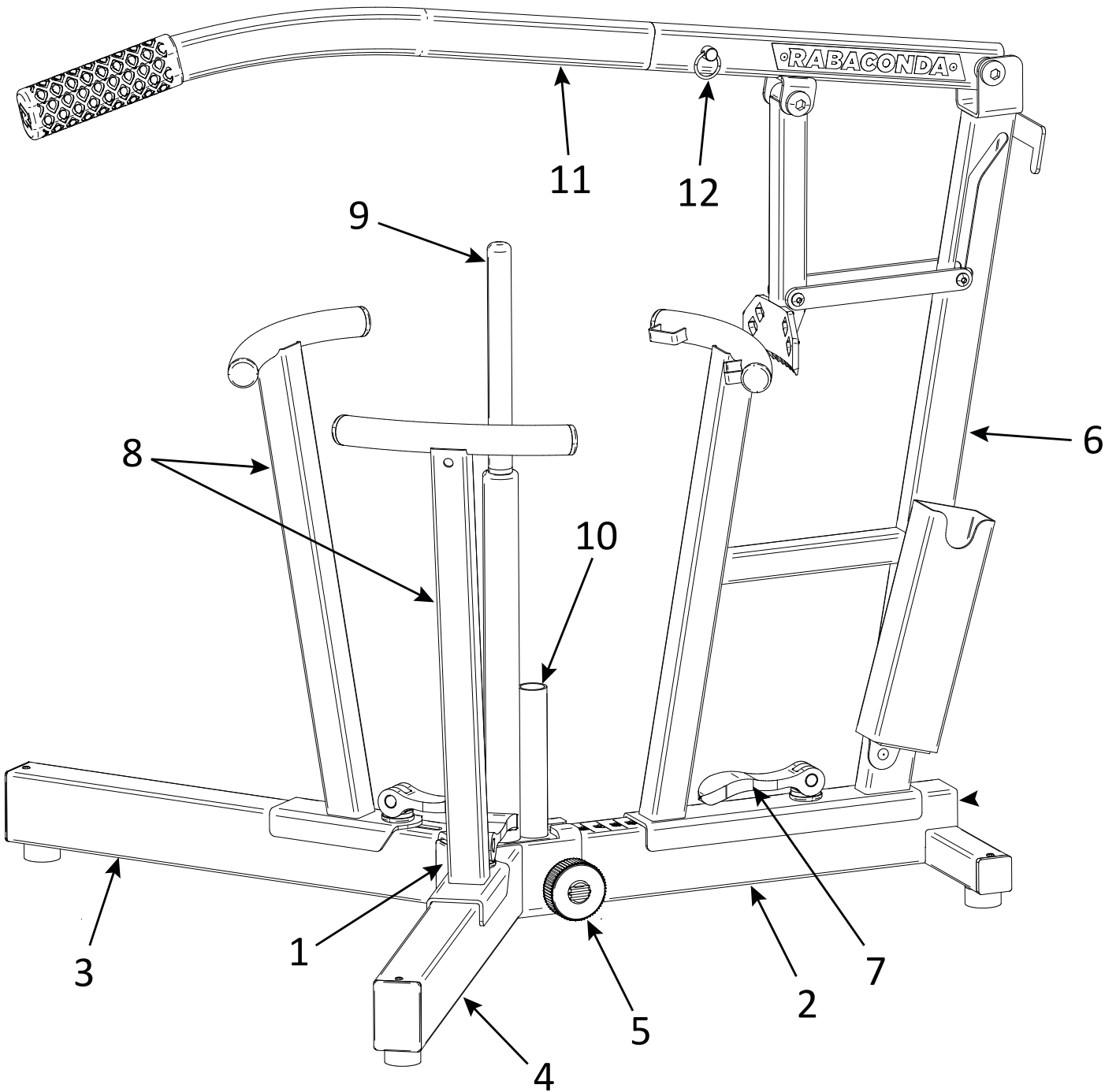


Figure A

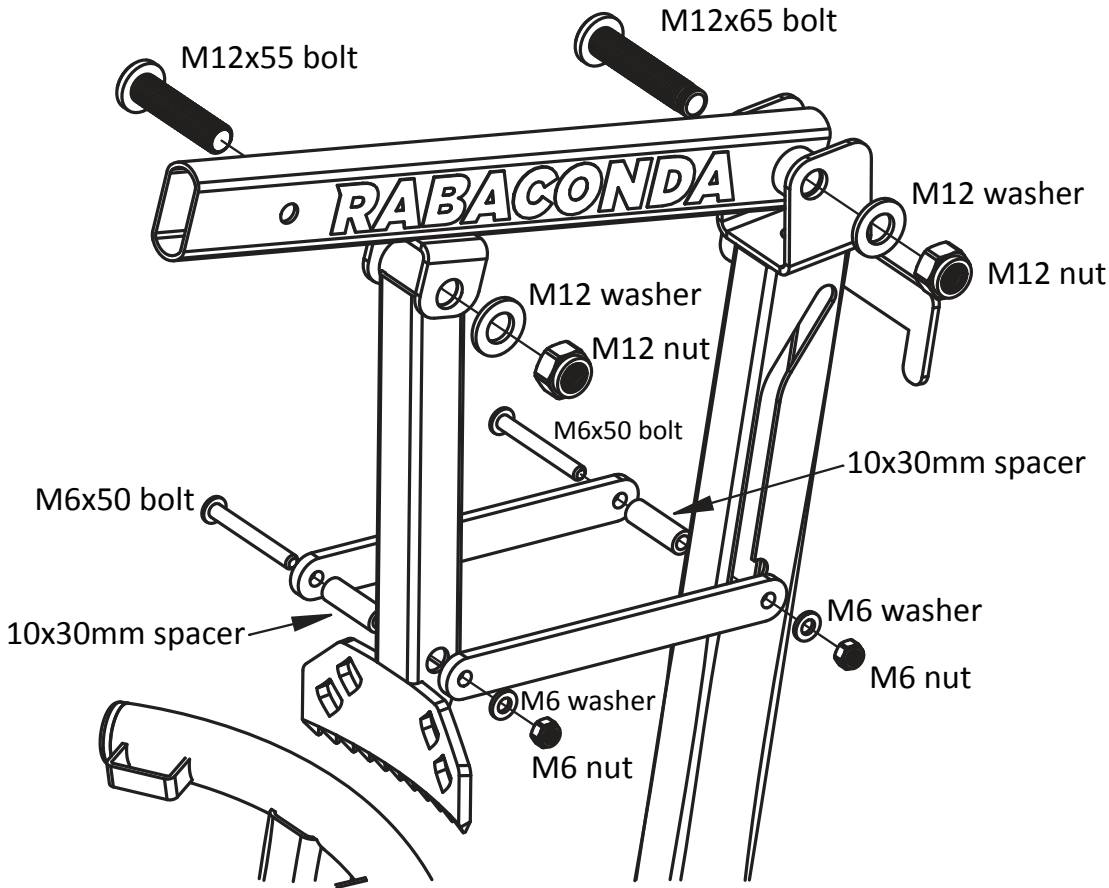


Figure B

5.7 Prepare for Operation

- 1. Ensure you read this manual thoroughly.
- 2. Clean the wheel from dirt and debris to avoid scratching the rim and spokes.
- 3. All parts of the tire changer that will get or might get in contact with the wheel must be clean. Swipe off all dirt and debris.
- 4. Inspect the Tire Changer and tire irons for damage. Replace parts if any noticeable damage that could harm the rim or tire is detected.
- 5. Position the wheel supports to match the rim diameter markings.
- 6. Always use an appropriate center spindle and center spindle sleeve to minimize the movement of the wheel.

NOTICE!



The wheel supports' position markings on the feet are for reference purposes only. The rim profile and spoke placement may vary. The wheel supports should always be under the spokes and set up as close to the rim as possible to avoid damage.

5.8 Dismounting a Tire

We highly recommend you also watch the tire change tutorial video.
Scan the code with your phone camera or go to rabaconda.com/start to watch tire change tutorials, assembly and packing instructions.



1. Clean the wheel from dirt and debris to avoid scratching the rim.

2. Place the wheel on the Tire Changer



- Place the Tire Changer on a flat surface.
- Place the wheel over the center spindle. Rear wheel should be placed with the brake disc facing up.
- Make sure that the wheel supports of the Tire Changer are positioned correctly and mount the center spindle sleeve if needed.
- Release the rim lock nut.
- Deflate the inner tube (if used). Ideally, a little bit of pressure should remain for the tube to hold its round form. This will reduce the changes of pinching the tube with tire irons or when dismounting the tire with the bead breaker in the later steps.

3. Break the bead and insert tire irons



- MOUSSE**
- Position the bead breaker in contact with the tire near the rim, but avoid contact with the rim.
 - Hold the bead breaker handle from its grip and use your bodyweight to separate the tire from the rim.
 - Place the tire iron next to the bead breaker and insert it between the tire and the rim. To make the process easier, simultaneously push the bead breaker handle down and insert the tire iron with one strong stroke.
 - Insert 3-4 tire irons with 2"-3" / 5-8cm distance from the previous.

- INNER TUBE**
- Break the bead all around the rim with the bead breaker and insert 2-3 tire irons. No need to use the bead breaker for tire iron insertion.

NOTICE!

When using Rabaconda Pro Tire Irons, use the straighter tip of the tire iron for dismounting a tire. The straighter tip is more robust, and the tire irons are easier to remove after partial dismounting of the first bead. When dismounting a tire with an inner tube, either of the ends can be used.

USE THIS END FOR **DISMOUNTING A TIRE**

- 📍 Easier to insert
- 📍 More strength
- 📍 Easily slides out later

USE THIS END FOR **MOUNTING A TIRE**

- 📍 Requires less force to mount a tire
- 📍 Pivots the tire bead down earlier
- 📍 Hooks better behind the rim

4. Partially dismount the first bead



5. Flip the wheel around



6. Dismount a tire with the bead breaker



- MOUSSE**
- Pull the tire irons one at a time to partially dismount the first bead.
 - Start with tire irons in the middle as this reduces the chances of the outer ones sliding out.
 - If needed, rotate the wheel quarter of a turn and use the bead breaker to force the tire down to the drop center of the rim. This will make pulling the tire irons easier.
 - After flipping all tire irons pull them out. At least 1/5 of the first bead should be dismounted before proceeding to the next step.

- INNER TUBE**
- Dismount at least 1/4 of the first bead by using tire irons.
 - Push the tube valve stem through the hole in the rim, so it is no longer visible from outside. This will avoid breaking the valve stem when progressing to the next steps.

- Turn the wheel to its other side. The rear wheel should have the sprocket side facing up now.
- Make sure that the wheel supports of the tire changer are in contact with the spokes.

- MOUSSE**
- Align the dismounted section of the tire under the bead breaker and push the bead breaker down.
 - Rotate the wheel by small increments and use the bead breaker to dismount the first bead all around the rim. Do not attempt to dismount the second bead before the first bead is completely dismounted from the rim.
 - Only then proceed with dismounting the second bead. Make sure that the mousse is also completely under the rim now and use the bead breaker to dismount the second bead. Start from the opposite side of the rim lock.
 - In case the bead breaker slides over the tire and does not dismount it, insert a tire iron between the tire and the rim near the bead breaker to apply additional tension to the bead and try again.



6. Slide the second bead over the rim lock




INNER TUBE

- Align the dismantled section of the tire under the bead breaker and push the bead breaker down.
- Pay close attention that the valve and the inner tube does not get between the tire and the rim.
- Rotate the wheel by small increments and use the bead breaker to dismount the first bead all around the rim. Do not attempt to dismount the second bead before the first bead is completely dismantled from the rim.
- Dismount the second bead with the bead breaker. Start from the opposite side of the rim lock.
- In case the bead breaker slides over the tire and does not dismount it, insert a tire iron between the tire and the rim near the bead breaker to apply additional tension to the bead and try again.
- Lift the bead breaker guide plates up and push the tire over the rim lock with the bead breaker. The tire is now completely dismantled.

5.9 Mounting a Tire


NOTICE!

- 
- ENSURE DURING THE MOUNTING PROCESS THAT THE TIRE IS IN THE DROP CENTER OF THE RIM AT THE OPPOSITE SECTION OF WHERE THE TIRE IS BEING MOUNTED WITH TIRE IRONS.
 - Always start by applying sufficient amount of bead grease to the tire bead on both sides.
 - Check if the tire has a directional rotation indication and align accordingly on the rim.
 - Always warm up a stiff sidewall tire before installing

1. Mount the first bead of the tire




NOTICE!

- 
- There are different ways to mount the first bead when an inner tube is used. If the valve hole in the rim is close to the rim lock then put the valve through the valve hole first and secure it with the nut. If the valve hole is on the opposite side of the rim lock, then mount the first bead and put the valve through the hole in the rim after that.

- Place the mousse or inner tube inside the tire. Inflate the inner tube just enough for it to hold its form.
- Align the rim lock position with one of the side feet of the Tire Changer.
- Place the lower tire bead under the rim lock and push the first bead over the rim with your hand as much as possible.
- Keep your foot on the Tire Changer’s base frame foot to keep it stable and to prevent the tire from sliding off.
- Keep the tire down with one hand and use your other hand to mount the first bead with a tire iron. Two tire irons can be used if preferred.

NOTICE!

- 
- When using Rabaconda Pro Tire Irons, use the curved end of the tire iron for mounting a tire. The curved shape reduces the effort.

2. Lock the first tire iron



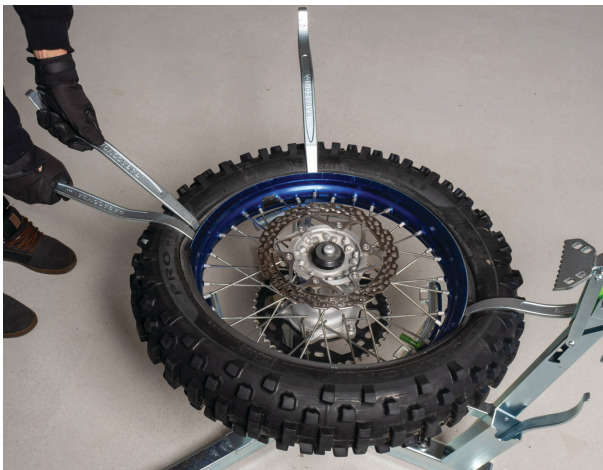
MOUSSE

- Position the rim lock near the bead breaker support.
- Mount the first bit of the tire near the rim lock and lock the tire iron behind the hook on the bead breaker support.

INNER TUBE

- Position the valve opposite of the bead breaker support regardless of where the rim lock is positioned. This will reduce the chances of getting the valve at a wrong angle after mounting.
- Mount the first bit of tire. Lock the tire iron behind the hook.

3. Mount the second bead



MOUSSE

- Mount the second bead with tire irons. Always pull the tire irons towards you to keep the Tire Changer stable. Keep your knee against the tire when needed for extra stability. Move around the Tire Changer as you progress.
- Use 2-3 tire irons to prevent the tire from dismounting.

- After mounting approximately 1/3 of the tire, insert a tire iron with its straighter tip between the tire and the rim and leave it until the end of the mounting process. This will help the tire to slide into the drop center in the later stages.
- Continue the mounting process with tire irons.

- When half of the tire bead has been mounted, insert second tire iron with its straighter tip between the tire and the rim and leave it until the end of the mounting process. This will help the tire to slide into the drop center in the later stages.
- Continue the mounting process with two tire irons.

- Take small steps with tire irons when nearing the end. Ensure the tire has slid into the drop center at the opposite side to avoid stretching the bead.
- Keep your knee against the tire when needed for stability.
- Stop when reaching the rim lock.
- At this point, only the sector of the second bead that matches the rim lock width should be unmounted.



- For correct mounting of the rim lock, position the rim lock section under the bead breaker and position the rim lock on the tire bead. DO NOT PUSH THE BEAD BREAKER DOWN YET.
- Support a tire iron on the brake disc to push the rim lock into the tire/mousse. In case the brake disc cannot be used as the support point, use one of the metal loops on the wheel support of the tire changer.
- Now push down the bead breaker and mount the bead correctly between the rim lock and rim.

- Ensure the tire is mounted correctly between the rim lock and rim.
- Remove all tire irons.
- Ensure the tire bead is seated on both sides and fasten the rim lock nut.

INNER TUBE

- Mount the second bead with tire irons.
- When getting to the rim lock, push the rim lock into the tire to allow the correct tire mounting.
- When mounting the last part of the tire, force the tire to the drop center of the rim from the opposite side.
- After the tire is completely mounted, inflate the tire, ensure the tire bead is seated on both sides and fasten the rim lock nut.

5.10 Packing, Transport, and Storage

Essential Rules for Transport:


- After use, clean the device from any dirt, bead grease, or other stains.
- Disassemble the device and store all parts in the supplied Rabaconda® bag.

Essential Rules for Safe Storage:

- After use, disassemble the device and store all parts in the supplied Rabaconda® carry bag.
- Pack with care to avoid damage.
- Store the bag in a dry room.
- Avoid strong solvents or abrasives for cleaning.

6 MAINTENANCE AND REPAIR

This manual describes periodic maintenance that the owner can do.



- Always perform maintenance on a level and solid surface in a well-lit, clean, and dry area.
- Keep all parts of the tool clean to ensure all parts fit together without problems. Dirty parts lead to damage and poor fitting.
- Provide adequate protection around moving or rotating parts, paying attention to the risk of pinching.
- Only use genuine or equivalent parts.
- Always use proper and good-quality tools

6.1 Ordering Parts

Contact Rabaconda® to order spare parts.

For faster processing of your order, please include the following information:

- Tool name (Dirt Bike Tire Changer).
- Date of purchase and your order number.
- Your shipping address and phone number.
- Part name and quantity. Refer to the part name in Chapter 3.7.
- Include photos of failed parts if possible.

7 SPARE PARTS AND WEARING PARTS

Always state the correct part name and your original order number/date when ordering parts.

Wearing Parts

Wearing parts are parts that usually wear out first during intentional use. For the reliable operation of a tool, it is essential that wearing parts are of high quality. Wearing parts are permanently excluded from the warranty.

Wearing Parts of the Dirt Bike Tire Changer:

- Plastic caps
- 10x30mm spacers
- Carry bag
- Rubber leg pads
- Bead breaker handle grip

Wearing parts are available for purchase at rabaconda.com or by email sales@rabaconda.com

8 SPECIFICATIONS

- Suitable for 16 - 21” wheels.
- Wheel hub inner diameter 20 - 27mm. (12-30mm with optional accessories)
- Weight (excluding the carry bag): 14,5 kg (32 lbs)
- Materials: Galvanized carbon steel, 6000-series aluminum, stainless steel logo
- Carry bag dimensions: 73 x 28 x 26 cm (29” x 11” x 10”)
- Shipping box dimensions: 80 x 29 x 27 cm (31” x 11.5” x 10.6”)

9 WARRANTY

9.1 Warranty Provisions

Rabaconda® guarantees the proper functioning of the provided equipment. However, Rabaconda® is not responsible for unsafe situations, accidents, or damage, which are the result of:

- Ignoring warnings and regulations as stated in this User manual.
- The use of the device for other applications or under other circumstances than stated in this documentation.
- Mutations to the machine include the application of different replacement parts as specified.
- Insufficient or careless maintenance.

9.2 Limited Warranty

This warranty is effective from 1 February 2024 and replaces all previous warranty terms issued by Rabaconda®. All previous warranty terms are null and void.

Lifetime warranty for manufacturer defects. It does not cover wear parts of the product. The carry bag, bead breaker handle grip, plastic caps, plastic spacers, and rubber leg pads are wear parts; the lifetime warranty does not cover them.

Surface finish is not guaranteed as the products are considered tools, and contact points will cause normal wear. Colors, patterns, and finishes are deemed cosmetic only and may vary. Damage of an aesthetic nature such as varnish, enamel, lacquer, paint, and damage due to corrosion or the gradual deterioration of the tire changer, is not covered.

Rabaconda® is not responsible for and will not warranty products that show obvious misuse, alteration, or abuse. You agree that Rabaconda® is the sole judge of determinations regarding such misuse, alteration, or abuse.

Warranties on structural steel parts of Rabaconda® products vary depending on the model and date of purchase.

Guarantees apply only to original purchasers and are not transferable. In the case of direct purchase from the factory, the product is automatically registered at the time of sale by the buyer(s). For products purchased from authorized dealers, the original invoice from that authorized dealer must be presented.

Evidence of purchase is required for all warranty claims. Evidence must be in the form of a copy of an original invoice/sales receipt or order confirmation e-mail showing the date of purchase in the owner’s name.

Warranties only apply to Rabaconda® products and parts. Third-party products, such as rims, tires, wheels, and spokes, are not covered by the guarantee.

Shipment of products for warranty claims from the customer to Rabaconda® and from Rabaconda® to the customer is the buyer’s responsibility.

Rabaconda® reserves the right to revise, amend, modify, or withdraw the terms of this warranty policy at any time and for any reason.

Rabaconda reserves the right to determine whether to honor or deny a warranty as it deems appropriate based solely on the objective judgment of Rabaconda® specialists.

9.3 Liability

Rabaconda® can’t be held liable for consequential damage (business interruption, product damage, etc.)

RABACONDA.COM

**FOLLOW US
FOR THE LATEST
TIRE CHANGE TIPS**



RABACONDA